

PH 261-1

The manual band sawing machine ideal for the cut of tubes and metal profiles that combines simplicity with high performance



□ **MANUAL SAW**

□ **BAND BLADE**

□ **FOR +60° CUTTING**

IT IS ALSO AVAILABLE IN THE HB VERSION:

- The HB device allows to perform single cuts without operator intervention by using the operating head weight controlled by an hydraulic circuit and valve.

- The HB device can be provided as a KIT to install in already manufactured machines.

- HB device is available only in three-phase version.

CUTTING RANGE

	○	□	▭
0° / mm	225	200	240 x 160
+45° / mm	160	140	155 x 115
+60° / mm	90	90	90 x 90
Max. open vice	245 mm		

PERFORMANCE CHARACTERISTICS

Blade size	2450 x 27 x 0.9 mm
Blade speed	46 - 92 m/min
Blade motor	0.70 / 0.81 Kw

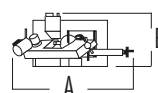
Capacity of coolant tank 15 L

Total input power 0.75 / 0.37 Kw

WEIGHT AND DIMENSIONS

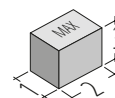
Height of working table 950 mm

Weight 240 kg



A = 1722 mm

B = 1129 mm



1 = 900 mm

2 = 1530 mm

3 = 1620 mm